

ArciTech double walled drawer system

- ▶ Interior organisation system for drawers and internal drawers
- ▶ Powder coated steel, silver



- ▶ Adapted to standard carcass width
- ▶ For 94 mm drawer side profile height
- ▶ Silver plastic, anthracite plastic dividing elements

Set comprises:

- ▶ 1 plastic cutlery tray
- ▶ Dividing elements for partitioning drawers in any way (quantity differs depending on width, see illustration of partitioning)

Advice:

- ▶ Nominal length of 400 mm can be produced by cutting the 450 mm nominal length to size
- ▶ Cut length = nominal length (NL) - 27

OrgaTray 570

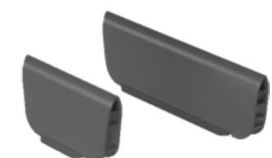
Carcass width mm	Order no. / nominal length in mm		PU
	450	500	
300	9 183 282	9 134 975	1 set
350		9 134 976	1 set
400	9 183 283	9 134 977	1 set
450	9 183 284	9 134 979	1 set
500	9 183 285	9 134 980	1 set
550	9 183 286	9 134 991	1 set
600	9 183 287	9 134 992	1 set
800	9 183 288	9 134 993	1 set
900		9 134 994	1 set
1000	9 183 289	9 134 995	1 set

Partitioning

NL	D	Partitioning diagrams									
400	373	[10 diagrams showing various partitioning layouts for NL=400, D=373]									
450	423	[10 diagrams showing various partitioning layouts for NL=450, D=423]									
500	473	[10 diagrams showing various partitioning layouts for NL=500, D=473]									
W	199	249	299	349	399	449	499	699	799	899	
CW	300	350	400	450	500	550	600	800	900	1000	

NL = Nominal length D = Depth W = Width CW = Carcass width

Dividing elements



- ▶ For OrgaTray 570
- ▶ Plastic, anthracite

Nominal length in mm	Order no.	PU
68	9 204 203	1/50 ea.
128	9 204 200	1/50 ea.